

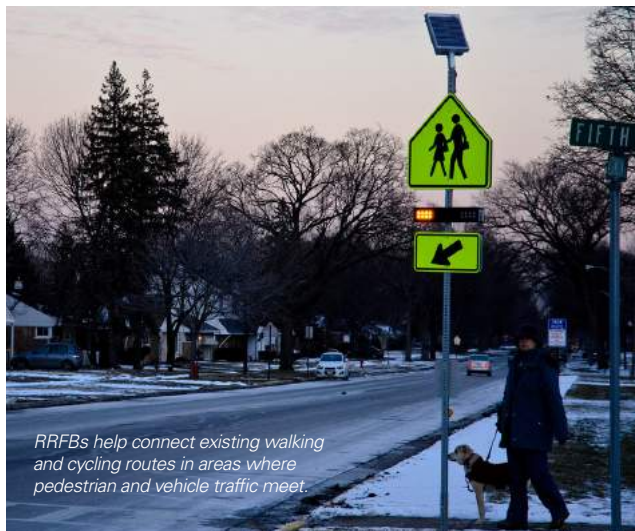
CROSSWALK SOLUTIONS FOR WALKABLE NEIGHBORHOODS



AN EASIER WAY TO IMPROVE PEDESTRIAN ACCESS

Improving walkability doesn't have to mean significant infrastructure changes. Every community has existing pedestrian-friendly routes that often only require enhancements to increase use and safety.

Rectangular Rapid-Flashing Beacons (RRFBs) are an easy and economical way to connect walkable routes and improve driver yield rates for pedestrians at crosswalks. They are recommended by the U.S. Department of Transport Federal Highways Administration (FHWA) and the Transportation Association of Canada (TAC).



RRFBs help connect existing walking and cycling routes in areas where pedestrian and vehicle traffic meet.

RRFB TECHNOLOGY

Rectangular Rapid-Flashing Beacons (RRFBs) are pedestrian-activated, high-intensity warning lights that notify drivers when a pedestrian is entering the crosswalk.

RRFBs are only for use in uncontrolled marked crosswalks (crosswalks marked with pedestrian, school or trail crossing signs).

RRFBs are not intended for crosswalks that already have stop signs, yield signs or traffic control signals.



Rectangular Rapid-Flashing Beacons are ideal for a range of applications:

- Intersections with through lanes on major legs
- Urban mid-block crosswalks
- Multi-lane crosswalks
- School zone crosswalks
- University campus crosswalks
- Roundabouts
- Greenways
- Trail crossings



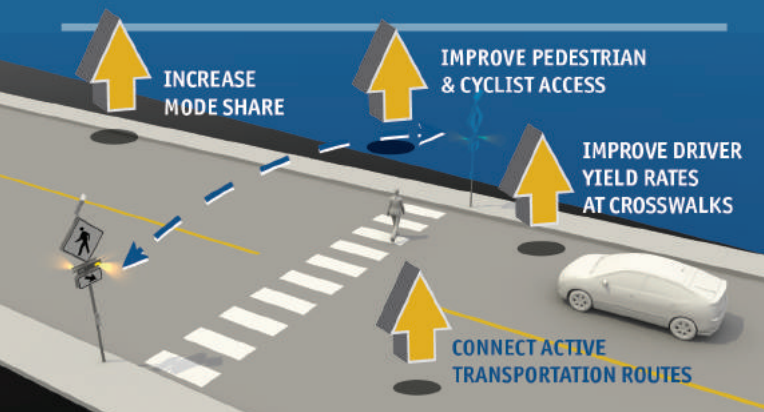
EASY INSTALL ONTO EXISTING SIGN POSTS

INSTALLATION TIME
IN **MINUTES**
NOT HOURS



USE EXISTING CREW AND EQUIPMENT

LIMITED
BUDGETS GO FURTHER



FLASHING BEACONS: A RECOMMENDED IMPROVEMENT

RRFBs are an important part of the traffic engineer's toolkit when seeking to improve pedestrian service levels and multi-modal transportation access.

RRFB effectiveness has been documented by:

- The U.S. Department of Transport Federal Highways Administration (FHWA)
- The Transportation Association of Canada (TAC)
- Transit Cooperative Research Program (TCRP)
- National Cooperative Highway Research Program (NCHRP)
- Oregon Department of Transportation (ODOT)

RRFB crosswalk improvements are an important element in creating safer communities as seen in:

- Pedestrian master plans and design guidelines in major urban centers including Portland, OR; Philadelphia, PA; Chicago, IL; Boston, MA and Washington DC
- Pedestrian projects in suburban municipalities across North America

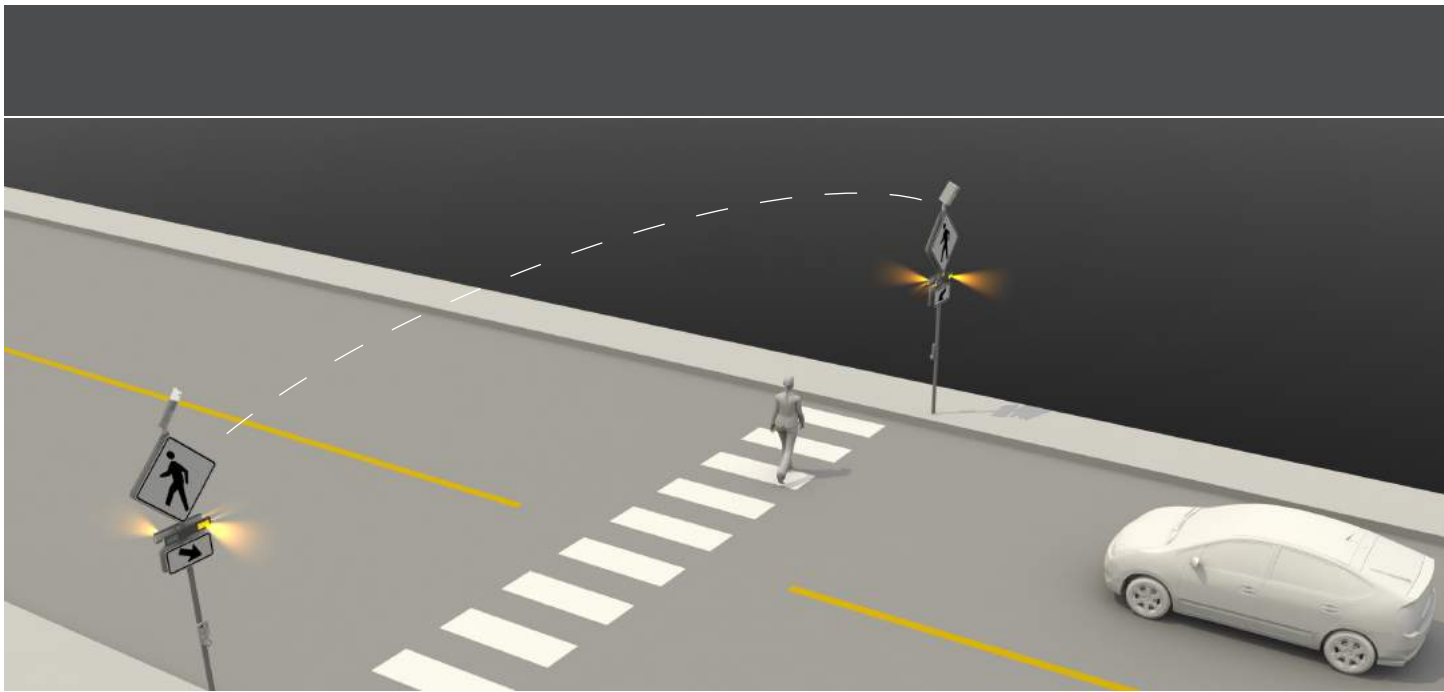


Rectangular Rapid-Flashing Beacons improve driver yield rates from 18% to up to 96%*.

They also:

- Improve pedestrian safety across wide, high-speed multi-lane roads
- Increase driver yield rates by 73% over traditional round beacon systems
- Sustain driver yield behavior over time

*Federal Highways Administration (Publication No. FHWA-HRT-10-043)



Pedestrian activated RRFBs are installed on either side of the crosswalk.

CARMANAH TRAFFIC

Carmanah's mission is to provide active communities with affordable and accessible crosswalk solutions that improve the places people live, work and play. Carmanah crosswalk solutions are ideal for communities looking to transform their urban landscapes into vibrant, livable spaces shared by all modes of transportation. RRFBs are an ideal fit for Smart Growth America initiatives, Complete Street projects and communities seeking LEED for Neighborhood Development certification.



Email: traffic@carmanah.com
 Toll Free: 1.844.412.8395 (North America)
 Worldwide: 1.250.380.0052 x.6216
 Fax: 1.250.380.0062

www.carmanah.com/traffic/crosswalks

