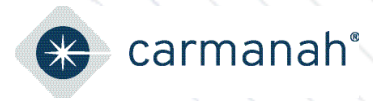


# SPEEDCHECK-15/18

## Radar Speed Sign Data Sheet



Quality radar speed sign systems packed with features to maximize effectiveness:

- ✓ Large 15" or 18" LED digits with various static sign sizes
- ✓ Optional "SLOW DOWN" message, strobes and external beacons available
- ✓ High-contrast display provides the greatest readability at a distance
- ✓ Mobile app for iOS® and Android™
- ✓ Stealth mode
- ✓ Calendar/schedule operation
- ✓ Data collection with visualization and reporting software
- ✓ 3-year warranty

### Fully Compliant, Ultra-clear Display

Compliant to MUTCD standards for legibility, including LED color, character and letter height. The bright LED displays use 15-inch and 18-inch digits against a background designed for high-contrast visibility that prevents "88" ghosting—ensuring readability in all weather and lighting conditions. The unique safety mask limits the viewing angle to prevent drivers from watching the display as they pass. The "SLOW DOWN" message can be programmed to flash at user-defined speed thresholds.

### Long-lasting, Reliable Operation

The LED display is housed within a durable, weatherproof aluminum unit and is shielded with a tough polycarbonate window for added vandalism protection. Every solar-powered model is solar-sized by location to ensure year-after-year operation. Carmanah includes a Solar Power Report to prove sustainability over a 12-month period.

### Easy Installation and Connectivity

The modular design makes it easy to repair using standard tools—without removing the device from the pole. Bluetooth® allows for quick connectivity and setup via the SpeedCheck Manager mobile app or PC software. Carmanah's comprehensive support system includes product support technologists and our 24/7 on-demand [Product Support Center](#).



#### SPEEDCHECK-15

15-inch digits for speeds less than 45 mph (70 km/h)



#### SPEEDCHECK-18

18-inch digits for speeds equal/greater than 45 mph (70 km/h)



MUTCD compliant



Buy America compliant



3-year limited warranty



Solar-sized for every location



Up to 1000 feet radar detection



APP



SOFTWARE

## CONNECTIVE CAPABILITIES

# SPEEDCHECK-15/18

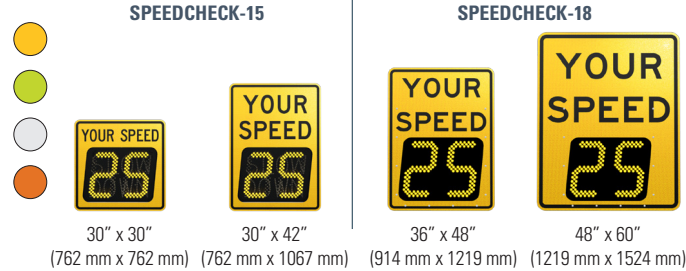
## Radar Sign Data Sheet

1.844.412.8395 | traffic@carmanah.com | carmanah.com



### "YOUR SPEED" STATIC SIGN

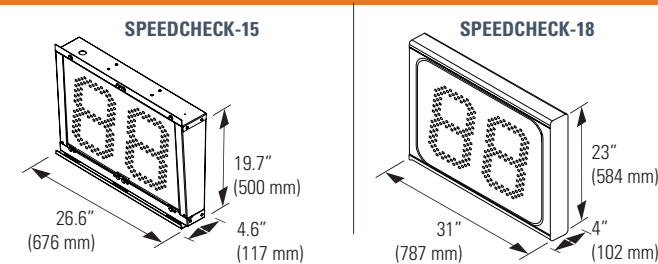
Sign	Meets MUTCD legibility standards for color, character and height
Sheeting	3M High Intensity Prismatic or Diamond Grade retroreflective sheeting and components
Color	Available in yellow, fluorescent yellow/green, white, and orange



### OPTIONAL PRODUCT FEATURES

Slow Down	Flashes MUTCD-compliant "SLOW DOWN" message when drivers exceed user-defined speed thresholds; available in yellow or red* LEDs
Outputs	Triggers external devices, such as flashing beacons, strobes, or cameras by speed threshold or schedule, or from centralized remote location Strobe*: rapid-flashing strobe with white LEDs or red/blue LEDs (for 15" display only). * Not FHWA MUTCD compliant Yellow or red round beacons: 12" (305 mm) or 8" (203 mm) LED modules
Inputs	Allows external devices to manage display operation with external contact closure and the included wiring harness

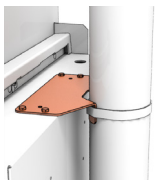
### LED DISPLAY



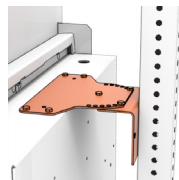
LED Display	Meets MUTCD legibility standards for character height and LED color for roadways with speed limits under 45 mph and 45 mph and over Seven-segment digit design using amber LEDs LEDs automatically dim during nighttime operation, minimizing light bounce into neighboring windows Includes stealth mode for data collection
Radar	3rd-party tested radar detection range to 1000 ft. Single-direction, K Band Doppler radar (+/- 1 mph), 12° radar beam width
Construction	Corrosion-resistant aluminum chassis with stainless steel hardware 1/4" polycarbonate window protects digital display from weather and vandalism

### LED DISPLAY MOUNTS

Standard Banding or U-Bolt



Flat Bracket



### COMMUNICATION AND DATA COLLECTION

Local	Bluetooth mobile app and PC software (SpeedCheck Manager)
-------	---

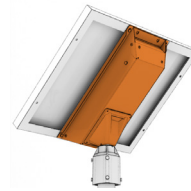


### POWER OPTIONS

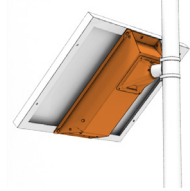
Solar	12 VDC operation, solar sized to specific geographic location Includes 12-month <a href="#">Solar Power Report</a> to ensure system sustainability System designed for 5+ year battery life <b>Integrated solar kit option:</b> includes solar panel, charge controller and batteries; lower cost option <b>Separate solar panel and cabinet option:</b> includes batteries, charge controller, room for 3rd-party devices
AC	100-240 VAC in standard configurations.

### INTEGRATED SOLAR KITS AND MOUNTS

Top of Pole Mount



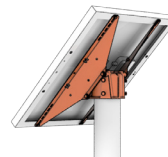
Side of Pole Mount



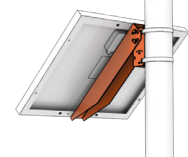
PANEL	LENGTH	WIDTH
30 W	21.5" (545 mm)	15.7" (400 mm)
50 W	26.3" (668 mm)	21.2" (538 mm)

### SEPARATED SOLAR PANEL/CABINET AND MOUNTS

Top of Pole Mount



Side of Pole Mount



PANEL	LENGTH	WIDTH
50 W	26.3" (668 mm)	21.2" (538 mm)
80 W	30.7" (780 mm)	26.5" (672 mm)
170 W	59.1" (1500 mm)	26.3" (668 mm)

Cabinet	Weatherproof, gasketed cabinet with vents for ambient air transfer tested to NEMA 3R Corrosion-resistant aluminum chassis with stainless steel hardware Lockable, hinged door with #2 lock; optional padlockable latch Raw aluminum finish or yellow, black, or green powder coated 15.7" x 8.2" x 21.0" (399 mm x 208 mm x 534 mm)
---------	---

### INCLUDED WITH EVERY SIGN

Software and Mobile App	SpeedCheck Manager <a href="#">mobile app</a> and <a href="#">PC software</a> for setup and programming, including calendar scheduling and data collection, via Bluetooth <a href="#">Traffic Analyzer</a> software for data visualization and reporting
Warranty	3-year limited warranty on LED display 1-year limited warranty on batteries
Support	Carmanah's North American product support technologists available for solution building, solar sizing and troubleshooting 24/7 access to Carmanah's online Product Support Center database
Customize	<a href="#">Build a SPEEDCHECK-15 online</a> OR <a href="#">Build a SPEEDCHECK-18 online</a>

The Bluetooth® word mark and logos are registered trademarks owned by Bluetooth SIG, Inc. and any use of such marks by Carmanah Technologies is under license. Other trademarks and trade names are those of their respective owners. Android is a trademark of Google LLC.

**Specifications subject to local environmental conditions, and may be subject to change.**

All Carmanah products are manufactured in facilities that are certified to ISO quality standards.

"Carmanah" and Carmanah logo are trademarks of Carmanah Technologies Corp.

© 2024, Carmanah Technologies Corp.

Document: Carmanah\_DATA\_SPEEDCHECK-15-18\_RevD