

SpeedCheck® Manager

PC Software for Device Programming and Scheduling



The SpeedCheck Manager software allows you to easily set up, program and schedule your SpeedCheck radar speed signs.

- ✓ Program the display from up to **100 ft away** with Bluetooth® wireless connection using our high-powered USB laptop dongle
- ✓ Streamlined interface and display settings let you program each sign in around **five minutes**
- ✓ **Data Logger:** Collect and download vehicle speed data for use in the [Traffic Analyzer software](#)
- ✓ **Scheduler:** Set up and manage unlimited operating schedules with a 2-year exception list
- + **Inputs/Outputs (optional):** Configure external devices such as beacons and strobes, or allow external devices to manage display operation



CONNECTIVE CAPABILITIES

PC SOFTWARE: QUICK VIEW

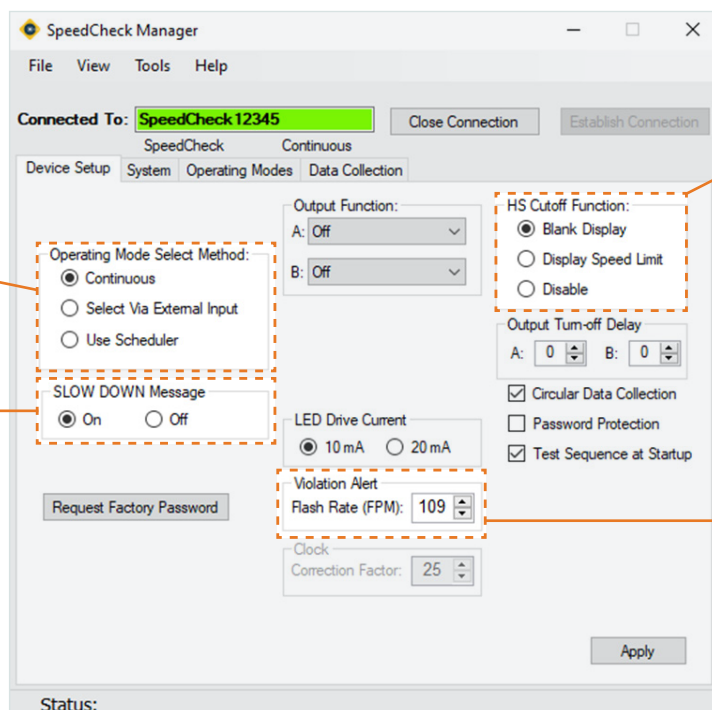
SIGN OPERATION

Run SpeedCheck continuously, from an external device, or using the Scheduler for calendar operation.

SLOW DOWN MESSAGE

Select whether the optional "SLOW DOWN" message will be displayed.

DOWNLOAD THE MANUAL



HIGH-SPEED CUTOFF

Choose what happens to the display when drivers reach excessive speeds: blanks out, flashes the speed limit, or disables the function and continues to flash a driver's speed.

VIOLATION ALERT FLASHING SPEED

Customize the digit flash rate when drivers meet or exceed user-defined speed thresholds.

INCLUDED WITH EVERY SPEEDCHECK SIGN

Software and Mobile App	SpeedCheck Manager mobile app and PC software for setup and programming, including calendar scheduling and data collection, via Bluetooth
	On-board data logger for collecting vehicle speed data, date and time
	Traffic Analyzer PC software for data visualization, analysis and reporting

COMMUNICATION OPTIONS

Local Bluetooth wireless
Direct serial (cable)*
Remote communication available: please contact Carmanah for options
* Only compatible with SPEEDCHECK-15/18/AS/VS models.

COMPATIBLE WITH

SPEEDCHECK-12/15/18
SPEEDCHECK-AS
SPEEDCHECK-VS

SYSTEM REQUIREMENTS

Windows 7** or 10 (32- or 64-bit) laptop/desktop computer
** A Bluetooth dongle may be required for laptops running Windows 7 and for desktop computers.

SpeedCheck® Manager

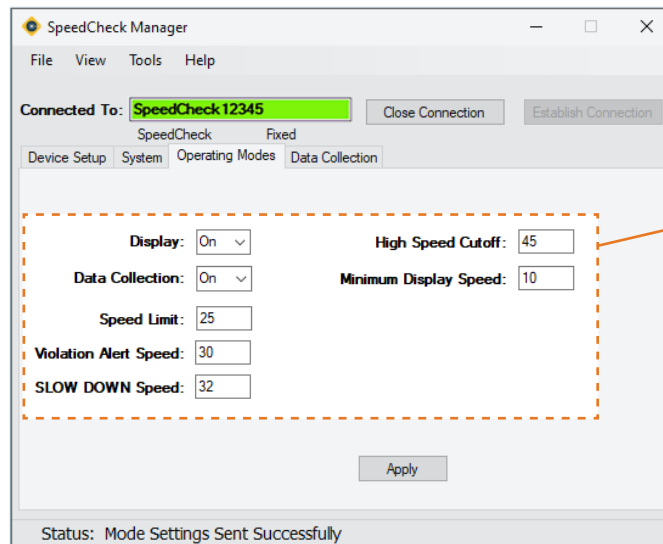
Device Programming and Scheduling Software

1.844.412.8395 | traffic@carmanah.com | carmanah.com



1 STANDARD OPERATION

All settings for 24/7 operation or as a road speed data collector in stealth mode. Profiles are easily modified in the field and can be saved and assigned to all other signs on site.

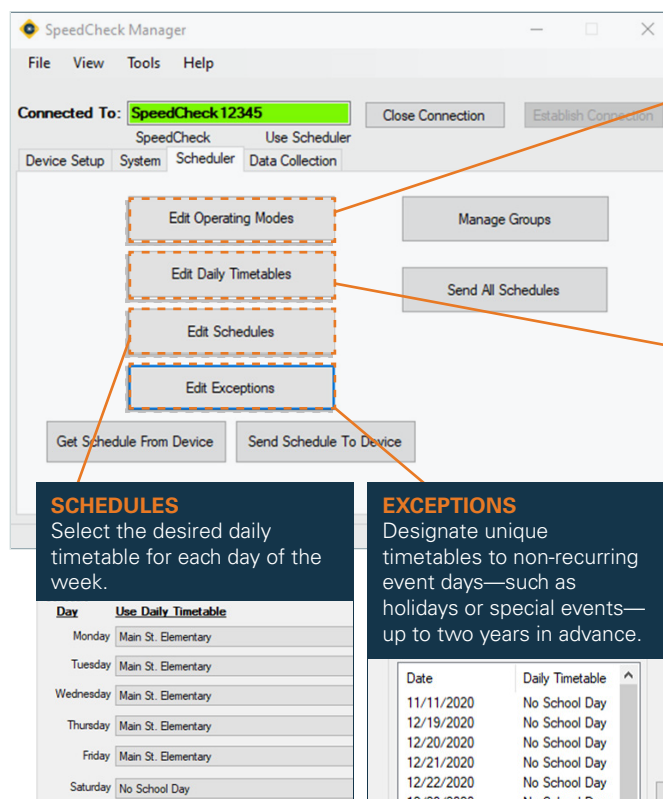


OPERATING MODES

Configure the display's speed parameters: set the road's speed limit, the speeds that trigger the digits to flash and display the optional "SLOW DOWN" message, and the minimum and maximum display speeds.

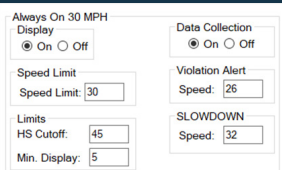
2 SCHEDULER OPERATION

Program and manage calendar schedules for multiple SpeedCheck signs, including simple on/off functions, data collection times and operation of external devices like flashing beacons and cameras. Assign schedules to multiple signs.



OPERATING MODES

Program speed thresholds, display settings, and external outputs.



DAILY TIMETABLES

Create timetables by assigning user-generated operating modes to the desired time periods when they need to be in effect (up to 16 events per day).

Time	Mode
1 12:01 AM	No School 40 MPH
2 8:40 AM	School Hrs. 15 MPH
3 9:40 AM	No School 40 MPH
4 12:10 PM	School Hrs. 15 MPH
5 1:10 PM	No School 40 MPH

SCHEDULES

Select the desired daily timetable for each day of the week.

Day	Use Daily Timetable
Monday	Main St. Elementary
Tuesday	Main St. Elementary
Wednesday	Main St. Elementary
Thursday	Main St. Elementary
Friday	Main St. Elementary
Saturday	No School Day

EXCEPTIONS

Designate unique timetables to non-recurring event days—such as holidays or special events—up to two years in advance.

Date	Daily Timetable
11/11/2020	No School Day
12/19/2020	No School Day
12/20/2020	No School Day
12/21/2020	No School Day
12/22/2020	No School Day
12/23/2020	No School Day

3 REMOTE OPERATION

See our [StreetHub model and Glance™ software option](#).

4 iOS®/ANDROID™ MOBILE APP

Now available for [all SpeedCheck models](#).

The Bluetooth® word mark and logos are registered trademarks owned by Bluetooth SIG, Inc. and any use of such marks by Carmanah Technologies is under license. Other trademarks and trade names are those of their respective owners. Android is a trademark of Google LLC.

"Carmanah" and Carmanah logo are trademarks of Carmanah Technologies Corp.

© 2023, Carmanah Technologies Corp.

Document: Carmanah_SELL_SpeedCheck-Manager-scheduler_RevB