



Table of Contents

Table of Contents	2
1.0 System Components	2
1.1 Cell Modem Kit (Rack Mount).....	3
1.2 Cell Modem Kit (Installation).....	4
APPENDIX A: Cell Modem Kit (Cabinet-Based).....	8

1.0 System Components

Both the Cellular Modem Kit and Industrial Computer Kit include a Power Distribution Kit.

NOTE: Depending on the scenario, some parts may be unutilized.

DC Power Distribution Kit:

- Install Guide (1)
- DIN Rail (2)
- Nuts and screws (6)
- DIN Rail end stops (3)
- DIN Rail connectors and jumpers (2)
- Red/Black DC Power Wire pair (1)
- DC Power Harness (1)
- DC Power Label (1)
- Cable ties (7)

Cellular Modem Kit:

- Cellular Modem, DIN rail mount and antenna (1)
- Ethernet Switch (1)
- SMA extensions (2)
- Ethernet cables (2)
- DIN Rail connectors (2)
- DIN Rail end stops (3)
- Red/Black DC Power Wire pair (1)

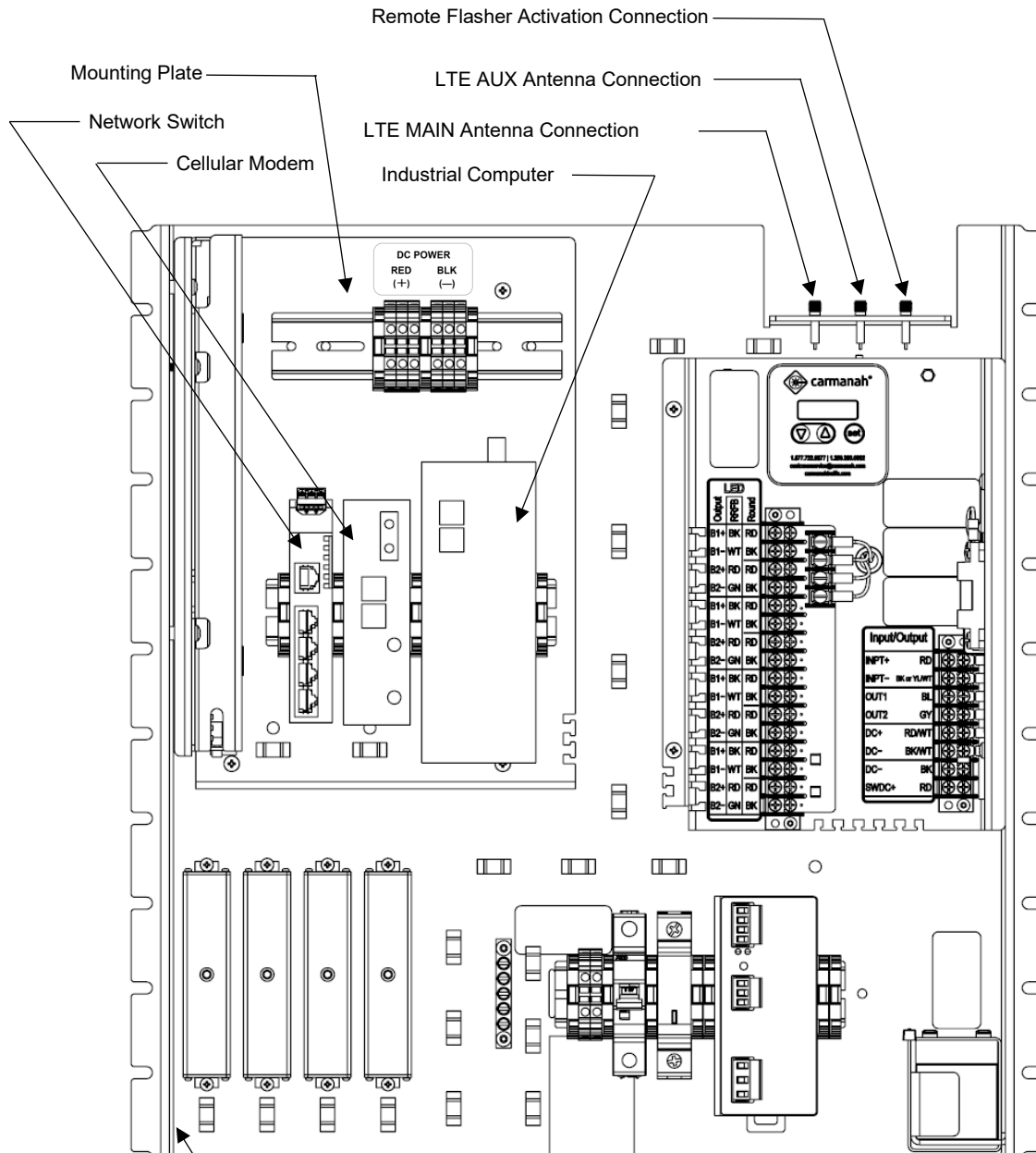
NOTE: SIM card for the cellular modem set up by installer/customer.

Industrial Computer Kit:

- Industrial Computer (1)
- Ethernet cable (1)
- Long Cable Ties (for securing computer AC/DC power supply if necessary) (4)
- DIN Rail end stops (2)

1.1 Cell Modem Kit (Rack Mount)

The Cell Modem Kit is secured to the DIN rail connected to the mounting plate in the top left corner beside the WW580 controller. DC power is broken out into additional terminal block connections.



NOTE: An alternative option to powering the industrial computer from the main system power supply, the Industrial Computer stock power supply may be used and secured to the side of the rack mount chassis in the location shown.



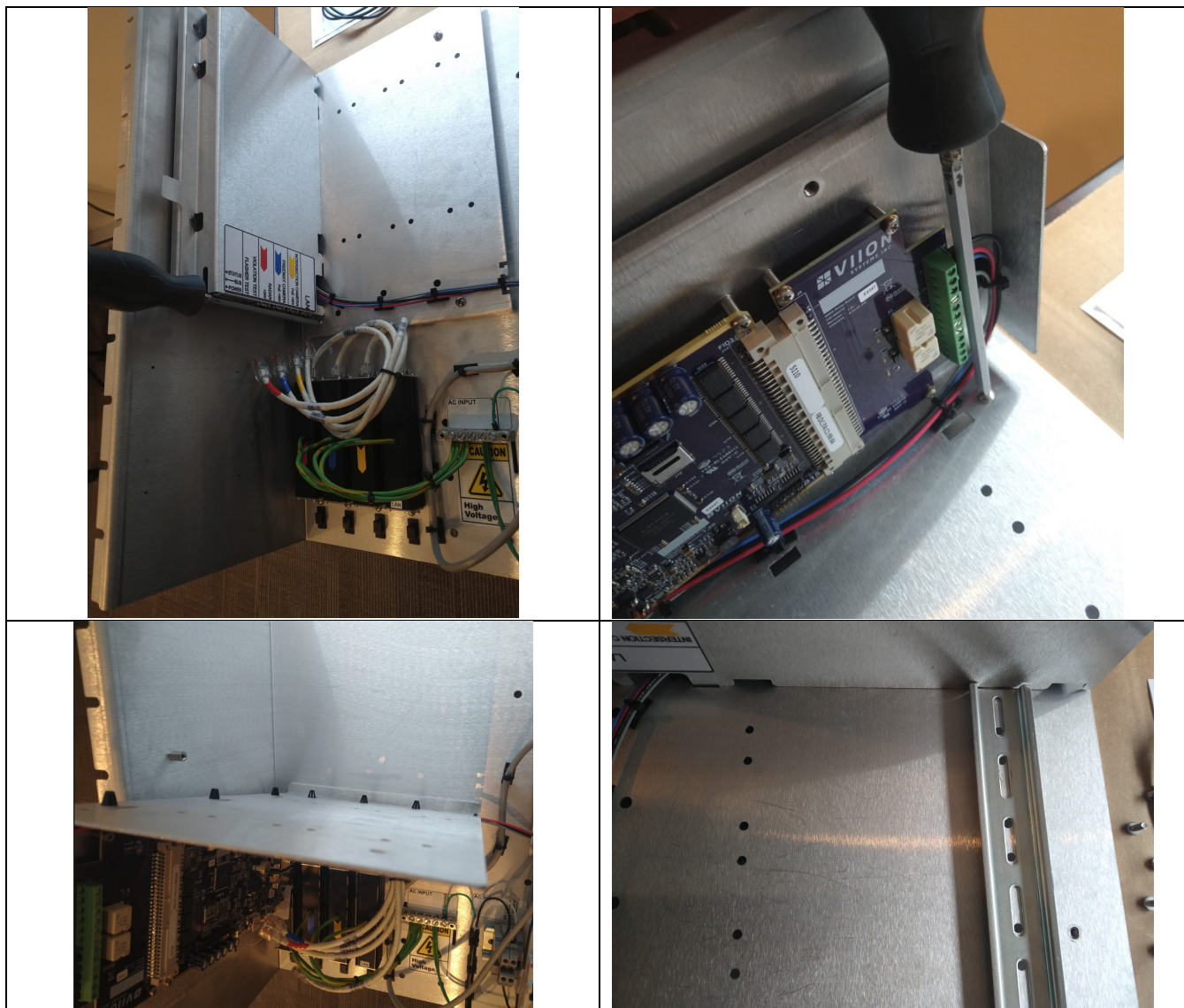
1.2 Cell Modem Kit (Installation)

- Remove the (2) Phillips screws securing the WW580 controller cover and remove cover.
- Disconnect the (4) ethernet cables connected to the WW580 controller.
- Remove the (5) remaining screws securing the mounting plate in place.
- Install the (2) DIN rails with (3) nuts and screws each.
- Afterwards, reinstall the (5) mounting plate screws then tighten.
- Reinstall the (2) WW580 cover plate screws then tighten.
- Reinstall the (4) ethernet cables according to the color-coded labels.

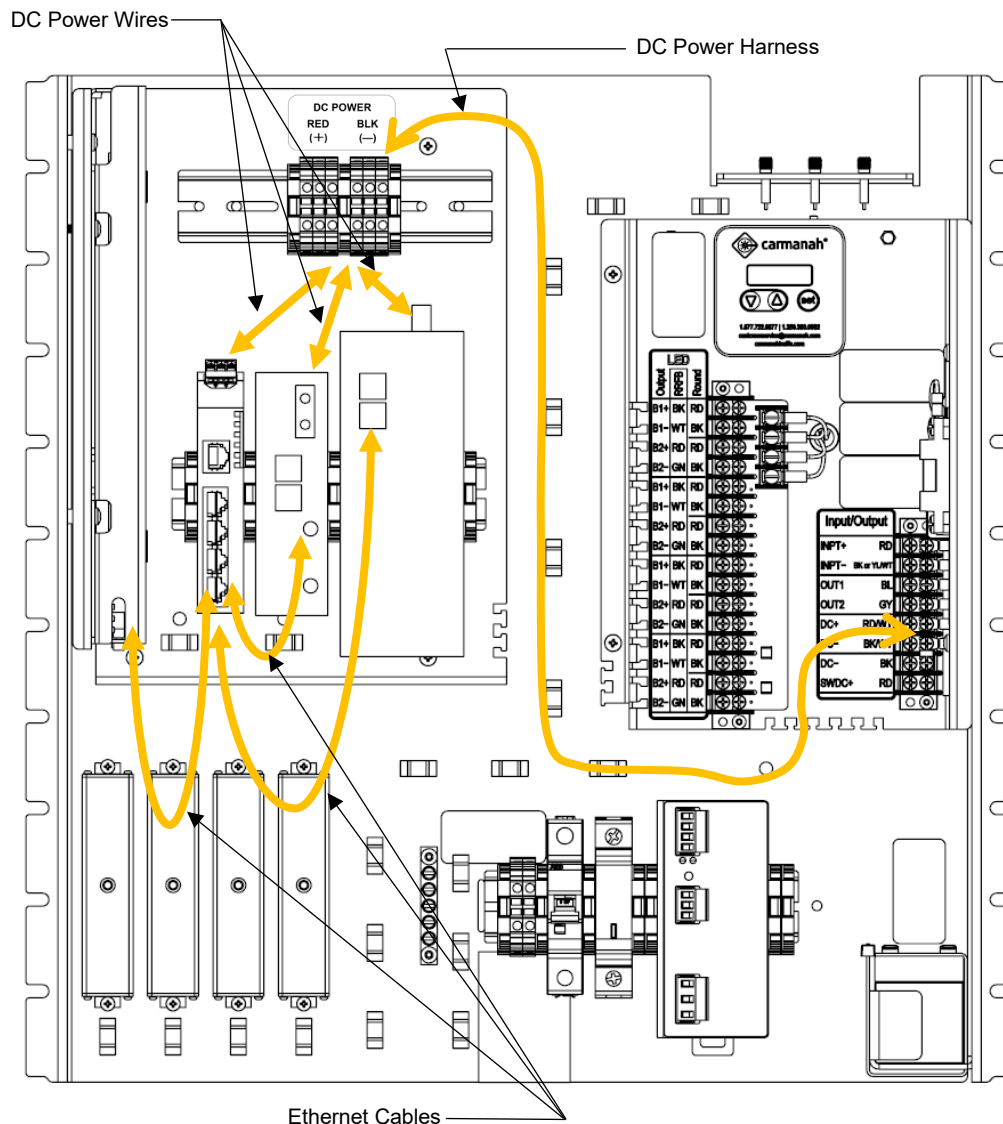


Connecting the radar cable to a camera port will result in damage to the radar unit due to the different operating voltages.

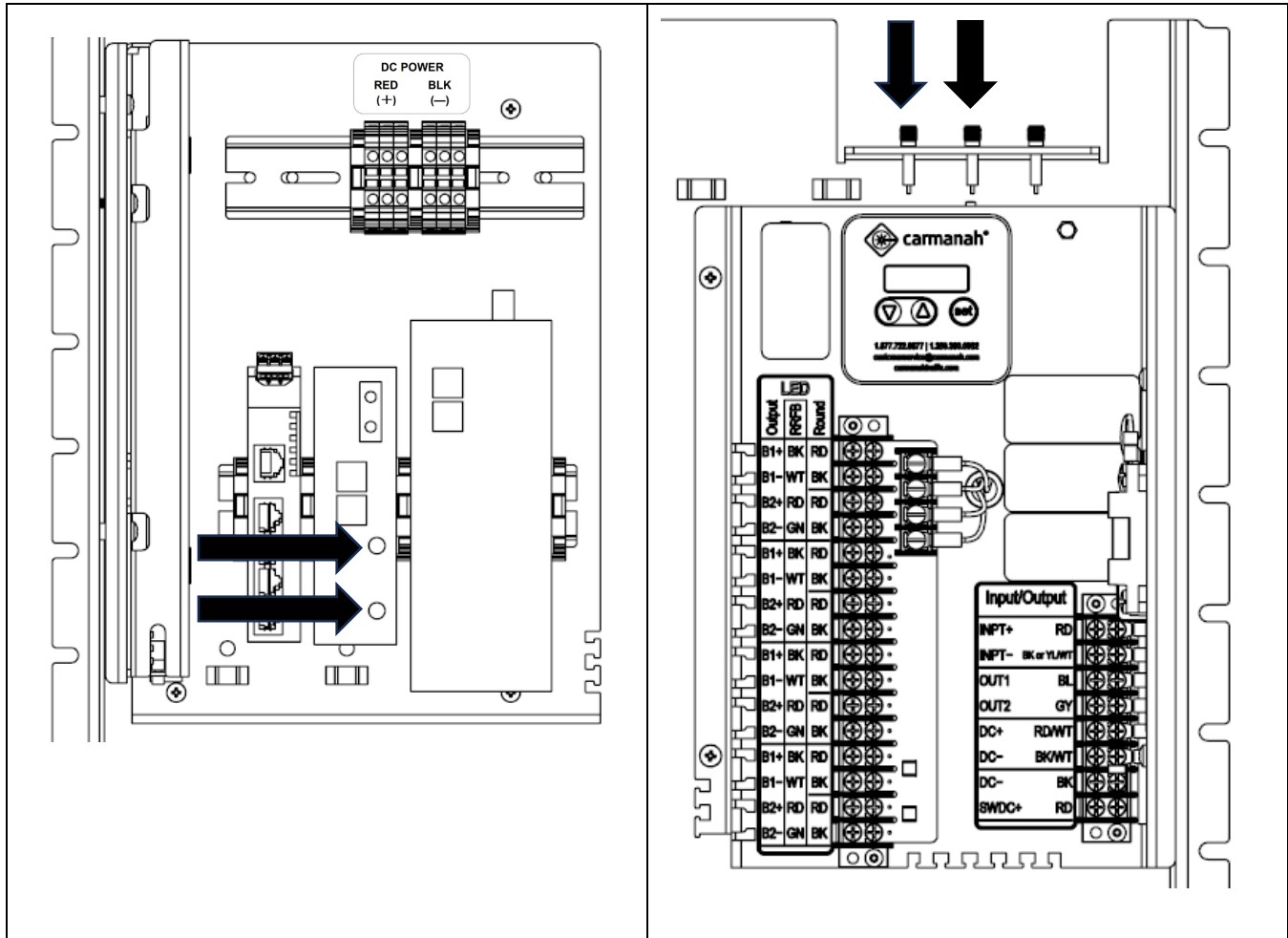
NOTE: A long-handled Phillips screwdriver is necessary to reach the screws closest to the WW580 controller.



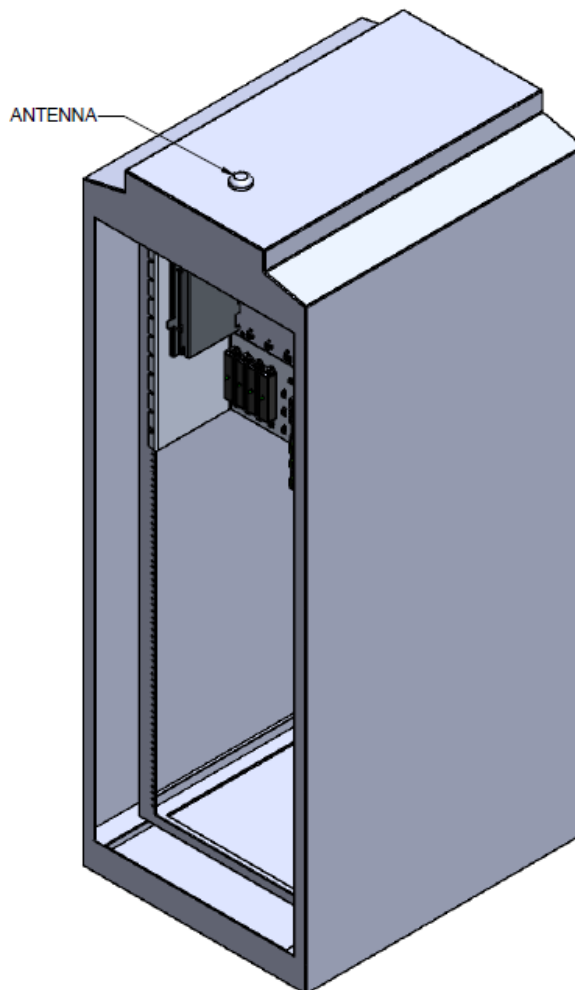
- Install DIN Rail connectors and end-stops onto top DIN rail as shown (additional 2 connectors shown for industrial computer).
- Insert DIN Rail connector jumpers between adjacent positive or negative terminals.
- Apply DC Power Label above DIN rail connectors
- Secure fork terminals to DC+ and DC- "input/output" terminal block.
- Route power from DC+ and DC- to top of terminal block connectors.
- Secure Power harness with cable ties.
- Install the modem / switch / industrial PC components.
- Connect jumpers from bottom of terminal block connectors to DC power inputs of ethernet switch, cellular modem and industrial computer (if present).
 - NOTE: Ethernet components are oriented with power terminals facing upwards towards DIN rail DC power connectors.



- Connect the modem SMA extensions from the modem to the bulk-head connector locations above the EMS user interface as shown and secure cables.

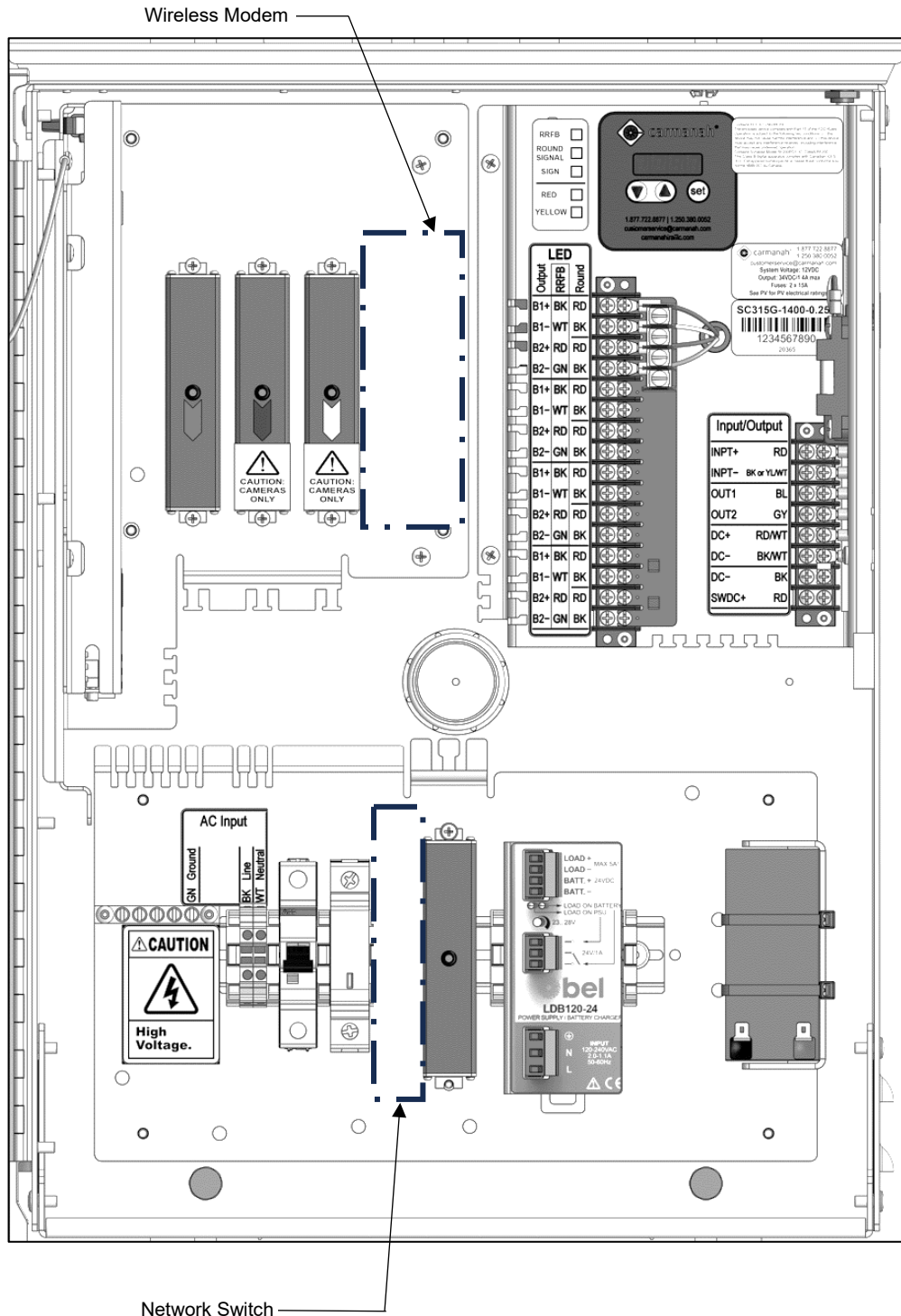


- Prepare cabinet for antenna installation.
- Ensure the modem antenna is at least 20cm distance from the remote flasher antenna.
- Drill a ½" hole for antenna mounting and deburr.
- Feed SMA cables through antenna mounting hole.
- Remove the antenna adhesive backing and secure the antenna to top of cabinet.
- Tighten the antenna nut on the inside of the cabinet.
- Connect the SMA antenna cables to the bulkhead SMA connectors previously installed.
- Connect the ethernet cables between:
 - WW580 LAN Ethernet Surge Protector to Ethernet Switch.
 - Wireless modem "ETH" port to Ethernet Switch.
 - Industrial PC Ethernet port to Ethernet Switch (if present).
- NOTE: "Link" port is unused on Ethernet switch port.



APPENDIX A: Cell Modem Kit (Cabinet-Based)

If the Cell Modem Kit is installed in the cabinet-based system, see the suggested component install location pictured below.





© 2025 Carmanah Technologies Corporation

Technical Support:

Email: customersupport@carmanah.com

Toll Free: 1.877.722.8877 (US & Canada)

Worldwide: 1.250.380.0052

Fax: 1.250.380.0062

Web: carmanah.com