

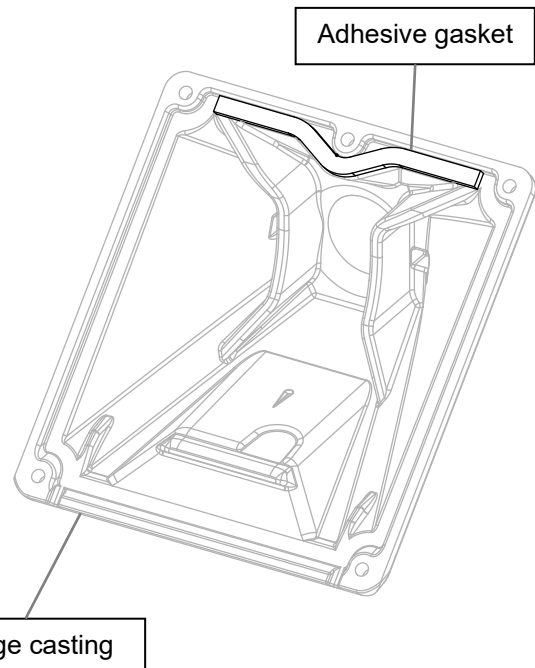
**NOTE**

Depicted assembly order does not include cable routing steps and be modified to suit preference.

1. Obtain wedge casting and adhesive gasket strip included with power module and install gasket strip along top edge as shown.

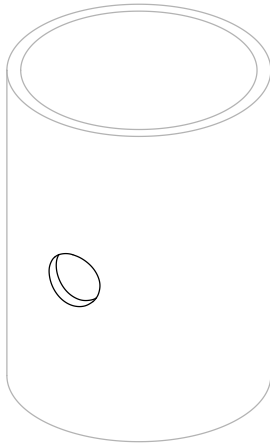


Failure to apply gasket could result in water entry and product damage.

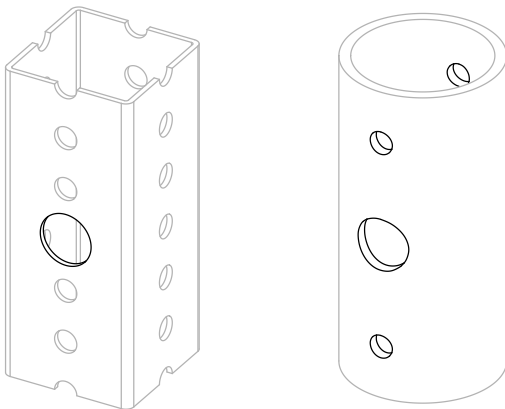




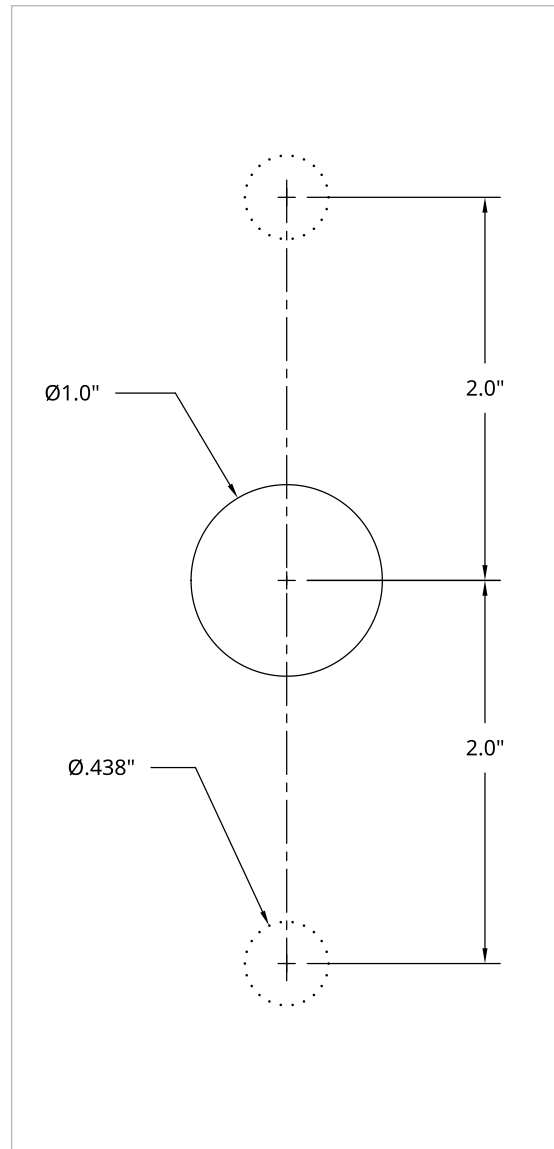
2. Determine appropriate installation location per **LEVEL 1** and **LEVEL 2** guides and mark pole accordingly.
3. If not using external conduit, drill/enlarge wire entry hole to 1" diameter using suitable step drill or hole saw. Deburr hole edges.
4. If through-bolting to plain post, drill bolt holes centered on wire entry hole. Recommended size is 0.438" diameter and 4" vertical spacing.



**Banded Method**



**Bolted Method**

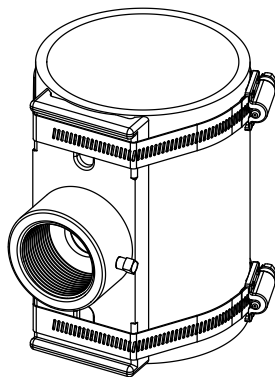
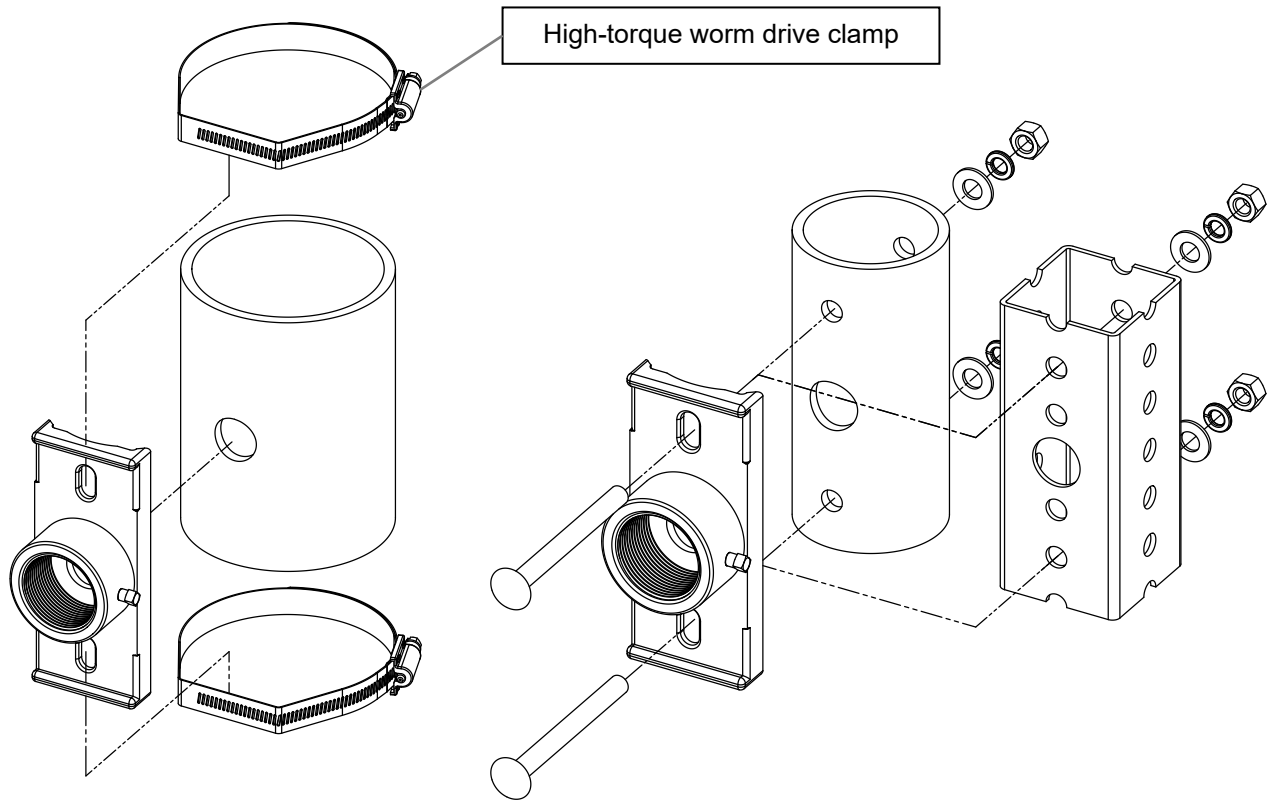




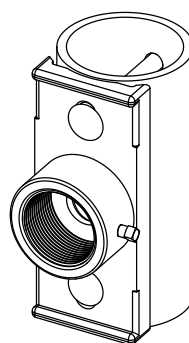
5. Band or bolt hub plate to post using suitable hardware (kits available from Carmanah).



Only use heavy duty “high-torque” (min. 75 in-lb rating) worm drive clamps or min 0.625” wide banding.



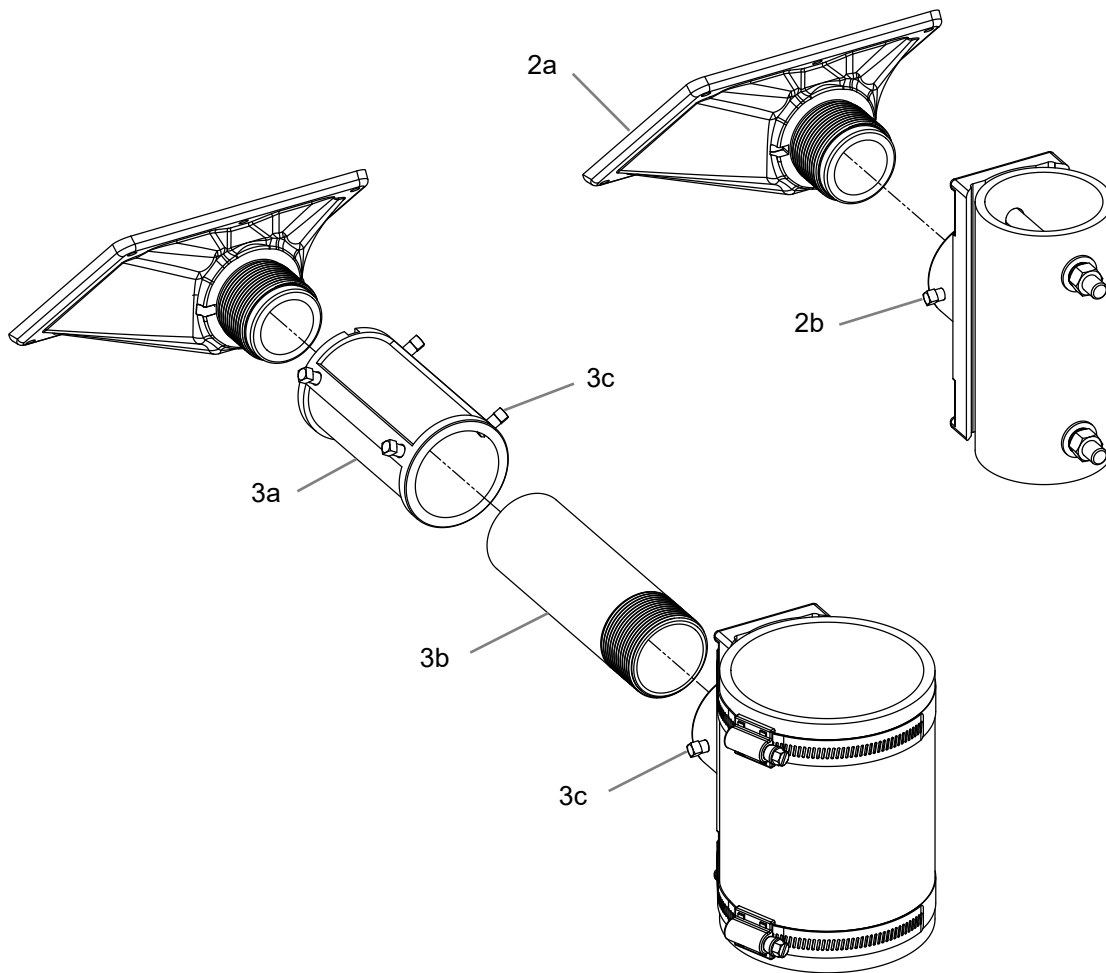
**Banded Method**



**Bolted Method**



6. **MX 100:**
  - a. Thread wedge casting all the way into hub plate.
  - b. Unthread wedge casting less than one turn until horizontal and tighten locking screw.
7. **MX 200:**
  - a. Thread slip fitter all the way onto wedge casting.
  - b. Thread support tube into hub plate.
  - c. Install slip fitter over support tube, ensure wedge casting is horizontal and tighten all locking screws.
8. Fasten solar power module (not shown) to wedge casting per **LEVEL 2** guide.



**NOTE: READ ALL INCLUDED INSTALL GUIDES BEFORE SYSTEM INSTALLATION**